

SMI-Lab II Plugfest #3

On **May 23 - 26**, the SMI-Lab held its third plugfest of 2011 at the SNIA Technology Center in Colorado Springs, Colorado.

Participating Companies

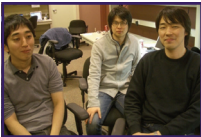
- Dell Compellent
- Inova Development
- SAV Innovations
- Dot Hill Systems
- Microsoft
- SNIA
- EMC
- NetApp
- WBM Solutions
- Hitachi Data Systems
- Quest Software



Themes:

- Security
- Scalability (CIM-XML)
- Installation & Configuration
- CTP Testing for SMI-S 1.5

Meeting face to face



We were glad that the **Hitachi** contingent from Japan was able to attend this plugfest; the earthquake had kept them home in March. **Nasu Hiroshi** and **Miyagaki Atshushi**, first time attendees to a plugfest, were anxious to learn more about SMI-S and understand the requirements of Microsoft's product. Nasu commented, "It's good to ask questions directly" to engineers. **Jun Nakajima**, a Plugfest "regular" led the team.

Microsoft, offering and receiving value from the plugfest

What's the biggest value of a Plugfest? According to **Microsoft**, it's being able to "discover issues on the spot and fix them on the spot." **Madhu Jujare**, attending for his third consecutive plugfest, worked with his Microsoft team and other attendees to test the latest System Center Virtual Machine Manager (SCVMM), currently released in beta. **Ayman Raslan** appreciated meeting others in the industry and "learning what they are up to, building, and complaining about...how to get the pieces together and meet the standard (SMI-S)." **Vijay Chegu** performed integration testing with providers to "get them on board."



One goal: passing CTP (Conformance Testing Program)

The first goal of **Karina Rasyaeva** of **Dell Compellent**, was to prepare to pass CTP 1.5 for active management. "It's always useful to talk to other people here, including James (Rigger) re CTP." She also worked with Microsoft to be compliant with SCVMM and with **Karl Schopmeyer**, **Inova Development** re Open Pegasus. **Mike Smith**, **Dot Hill**, reported that testing Dot Hill's SMI-S 1.5 provider was going well. His company is adding provisioning methods, including copy services.



More quotes from the plugfest



◆ **Nilesh Maheshwari**, **NetApp**: "New information every time." ◆ **Tony Galan**, **NetApp**: "It's easier to install software when you are here; we can configure our rack." ◆ **David Perry**, **Quest Software**, whose



Nilesh Maheshwari & Tony Galan (NetApp) work with the MS team.

goal was to set up hardware and software on servers: "What's most valuable is connecting with people."

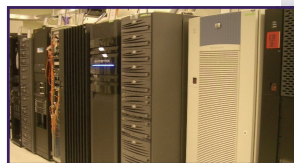
◆ **Rich Roscoe**, **EMC**: "I'm here to support all the clients that are here and continue to advance the standard." ◆ **Mohamed Lawindi**, **Microsoft**, in his second visit to a plugfest, noted, "I'm glad to see more people here at the plugfest. It means more work, but that's good!" ◆ **Karina Rasyaeva**, **Dell Compellent**: "I wanted to test active management methods and get more feedback from client apps." ◆ **Mike Smith**, **Dot Hill**: "I want to make sure we can provision with the Microsoft system." ◆ **Vijay Chegu**, **Microsoft**: "It's very helpful to meet people I've emailed."

SMI-Lab II Plugfest #4:

August 8-11, 2011

[SNIA Technology Center](http://www.snia.org/technology-center)

Visit www.snia.org/smilab to register.



"With the new equipment being delivered this week, SMI-Lab now has a very strong representation of enterprise and mid-range level arrays to facilitate software testing."

- Jim Davis, May Plugfest